

DTSU666

Accessories



ACCURATE MEASUREMENT

- Class 1 measurement accuracy



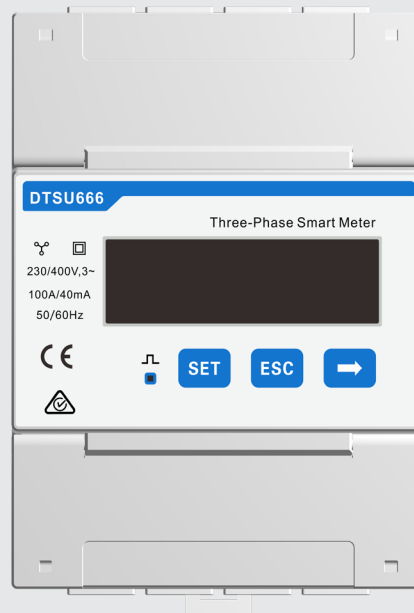
EASY OPERATION

- LCD display, easy to set and check
- Meter with CT for easy installation



HIGH EFFICIENCY

- Overall power consumption ≤ 1 W



Technical Data	DTSU666	
Input		
Rated voltage	230 Vac L-N / 400 Vac L-L	
AC voltage range	184 Vac - 276 Vac L-N	318 Vac - 480 Vac L-L
Measurement range	CT: 0 -100 A	
Accuracy class	1	
Power consumption	≤ 1 W (5 VA)	
CTs available input no.	3	
Communication		
Serial port	RS485 *1, 9600 bps	
Protection and data storage		
Insulation resistance	> 100 M Ω	
Overvoltage category	II	
Data storage time	10 years	
Ambient conditions		
Operating temperature	- 25 °C - + 70 °C	
Storage temperature	- 30 °C - + 70 °C	
Relative air humidity	≤ 75 % (non-condensing)	
Max. operating altitude	≤ 4000 m	
Protection class	IP20	
Mechanical parameters		
Dimensions (W * H * D)	72 mm * 100 mm * 65 mm	
Weight	0.76 kg	
AC connection	1 mm ² - 6 mm ²	
Comm. connection	CAT5e 0.25 mm ² - 1.5 mm ²	
Mounting type	35 mm Din-rail mounting	
Certificate compliance	EN 61326-1, EN 61010-1	
CT specification		
CT model	CTF16-2K5-100	CTF16-5K-250
CT type	Split Core	Split Core
Max. input current	100 A	250 A
Cable lengths	6 m	6 m