

DDSU666

Accessories

ACCURATE MEASUREMENT

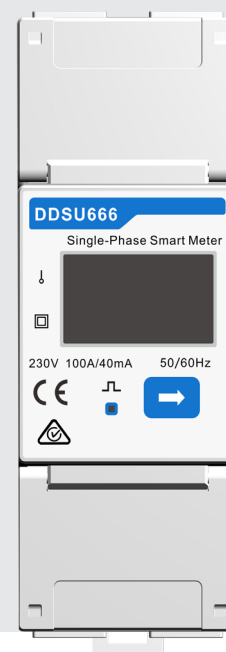
- Class 1 measurement accuracy

EASY OPERATION

- LCD display, easy to set and check

HIGH EFFICIENCY

- Overall power consumption ≤ 1 W



Technical Data	DDSU666
Input	
Rated voltage	230 Vac
AC voltage range	184 Vac - 276 Vac
Measurement range	CT: 0 A - 100 A
Accuracy class	1
Power consumption	≤ 1 W (5 VA)
CTs available input no.	1
Communication	
Serial port	RS485 *1, 9600 bps
Protection and data storage	
Insulation resistance	> 100 M Ω
Overvoltage category	II
Data storage time	10 years
Ambient conditions	
Operating temperature	- 30 °C - + 60 °C
Storage temperature	- 30 °C - + 70 °C
Relative air humidity	≤ 95 % (non-condensing)
Max. operating altitude	≤ 4000 m
Protection class	IP20
Mechanical parameters	
Dimensions (W * H * D)	36 mm * 98 mm * 65 mm
Weight	360 g
AC connection	1 mm ² - 6 mm ²
Comm. connection	CAT5e 0.25 mm ² - 1.5 mm ²
Mounting type	35 mm Din-rail mounting
Certificate compliance	EN 61326-1, EN 61010-1
CT specification	
CT model	CTF16-2K5-100
CT type	Split Core
Max. input current	100 A
Cable lengths	6 m